

## DS-K2600 Series

### Network Access Controller

DS-K2600 series access controller is designed with latest structure with TCP/IP and RS485 communication interface. The communication data is encrypted to improve the security of system. The controller also supports offline operation and is designed with tamper-proof switch.



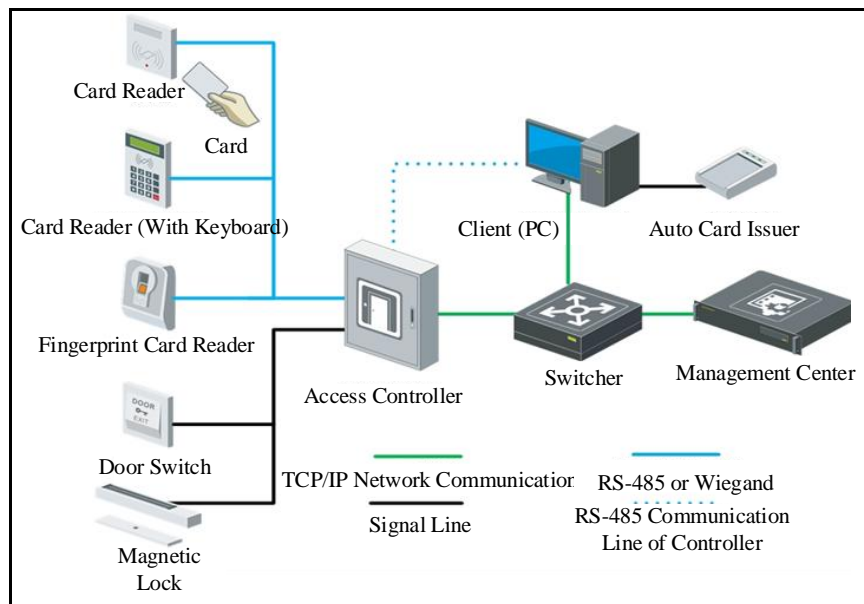
DS-K2601 Single-door Access Controller

DS-K2602 Double-door Access Controller

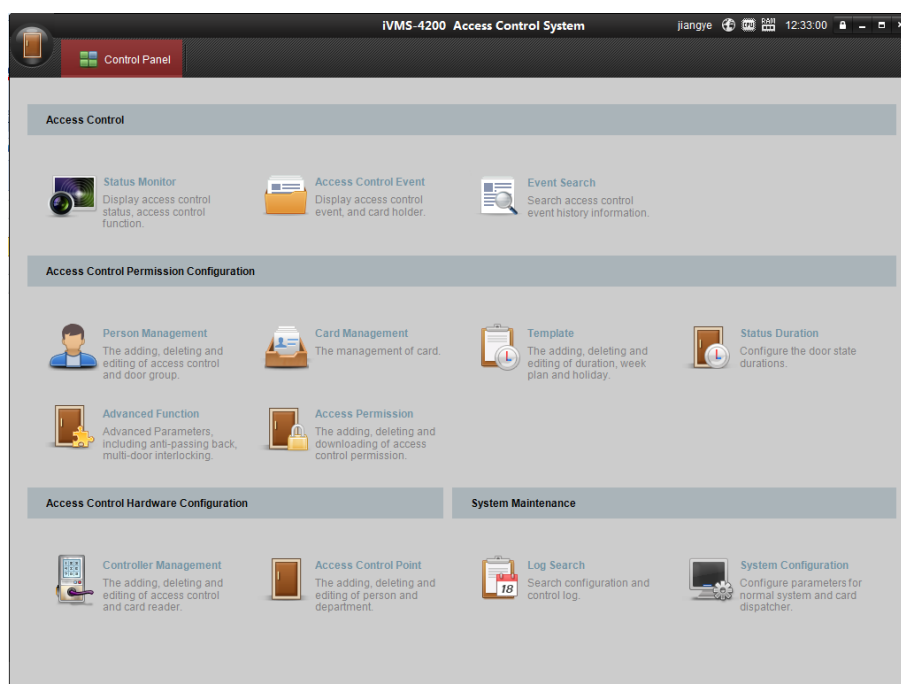
DS-K2604 Four-door Access Controller

- 32-bit high-speed processor;
- TCP/IP network communication, with self-adaptive network interface. The communication data is encrypted to ensure information security;
- The recognition and storage of card number with maximum 20 digits;
- Massive storage with 100,000 (can be expanded to 200,000) cards information and 300,000 (can be expanded to 600,000) access control events;
- Supports multi-door interlocking function (DS-K2602, and DS-K2604), anti-passback function, multi-card function, first card function, super card and super password function.
- Online upgrade function and online remote control of the doors;
- Supports alarm event upload (including tamper-proof alarm, unsecured door alarm, forced entry alarm, delayed door alarm, duress card and code alarm, blacklist alarm and alarm for invalid card swiping attempts alarm);
- Short circuit attempts alarm and open circuit attempts alarm;
- Supports zone alarm input;
- Supports RS485 interface and Wiegand interface for accessing card reader. Wiegand interface supports W26/W34 and is seamlessly compatible with third-party card reader with Wiegand interface;
- Supports various card types such as normal/ disabled/ blacklist/ patrol/ guest/ duress/

- super card, etc.;
- Supports standby battery;
- Various indicators to show different device status;
- Watchdog for device running status detection;
- Supports time synchronization via NTP, manual or automatic method;
- Data can be permanently saved when the access controller is powered off.



Topological Graph



Client Software Interface

Model	DS-K2601	DS-K2602	DS-K2604
Working Voltage	DC 12V/1A	DC 12V/1A	DC 12V/1A
Power Dissipation (with Load)	≤50W	≤100W	≤100W
Processor	32-bit	32-bit	32-bit
Capacity	16M	16M	16M
Uplink Communication Interface	TCP/IP Network Interface and RS-485 Interface	TCP/IP Network Interface and RS-485 Interface	TCP/IP Network Interface and RS-485 Interface
Downlink Communication Interface	RS-485 and Wiegand (w26/w34)	RS-485 and Wiegand(w26/w34)	RS-485 and Wiegand (w26/w34)
Storage	cards information: 100,000(200,000 expandable) access control events: 300,000 (600,000 expandable)	cards information: 100,000(200,000 expandable) access control events: 300,000 (600,000 expandable)	cards information: 100,000(200,000 expandable) access control events: 300,000 (600,000 expandable)
LED Indicator	Power Supply Status, Communication Status, Working Status	Power Supply Status, Communication Status, Working Status	Power Supply Status, Communication Status, Working Status
Built-in Clock	Yes	Yes	Yes
Accessible Card Reader	2 Card Readers (RS485 Interface) and 2 Card Readers (Wiegand Interface) Connectable	4 Card Readers (RS485 Interface)and 4 Card Readers (Wiegand Interface) Connectable	8 Card Readers (RS485 Interface) and 4 Card Readers (Wiegand Interface) Connectable
Input Interface	Alarm Input×4, Door Magnetic×1, Door Switch×1, Case Input×2, Tamper-proof×1	Alarm Input×4, Door Magnetic×2, Door Switch×2, Case Input×4, Tamper-proof×1	Alarm Input×4, Door Magnetic×4, Door Switch×4, Case Input×8, Tamper-proof ×1
Output Interface	Door Switch Relay×1, Alarm Relay×1	Door Switch Relay×2, Alarm Relay×2	Door Switch Relay×4, Alarm Relay×4
Working Temperature	-20°C to +65°C (-4°F to +149°F)	-20°C to +65°C (-4°F to +149°F)	-20°C to +65°C (-4°F to +149°F)

<b>Model</b>	<b>DS-K2601</b>	<b>DS-K2602</b>	<b>DS-K2604</b>
<b>Working Humidity</b>	10% to 90% (Non-Condensing)	10% to 90% (Non-Condensing)	10% to 90% (Non-Condensing)
<b>Dimensions (L×W×H)</b>	370x345x90mm (14.6x13.6x3.5")	370x345x90mm (14.6x13.6x3.5")	370x345x90mm (14.6x13.6x3.5")
<b>Certification</b>	CE, FCC	CE, FCC	CE, FCC